



SOUTH FLORIDA WORKFORCE INVESTMENT BOARD

Executive Committee Meeting

THURSDAY, May 9, 2019

8:00 A.M.

CareerSource South Florida Headquarters
7300 Corporate Center Drive
Conference Room 2
Miami, Florida 33126

AGENDA

1. Call to Order and Introductions
2. Approval of Executive Committee Meeting Minutes
 - A. April 11, 2019
3. Information – 2019-20 Budget Workshop
4. Recommendation as to Approval of an Allocation to Contract Training Services & Support Services for the TechHire Summer Boot Camps
5. Recommendation as to Approval of an Allocation to Contract Educational Support Services for the TechHire Summer Boot Camps
6. Recommendation as to Approval to Accept and Allocate Funds for the City of Opa Locka Summer Youth Employment Program

South Florida Workforce Investment Board dba CareerSource South Florida is an equal opportunity employer/program. Auxiliary aids and services are available upon request to individuals with disabilities. All voice telephone numbers on this document may be reached by persons using TTY/TDD equipment via the Florida Relay Service at 711.

"Members of the public shall be given a reasonable opportunity to be heard on a specific agenda item, but must register with the agenda clerk prior to being heard."



SFWIB EXECUTIVE COMMITTEE

DATE: May 9, 2019

AGENDA ITEM NUMBER: 2A

MEETING MINUTES

April 11, 2019 at 8:15 A.M

CareerSource South Florida Headquarters

7300 Corporate Center Drive, Suite 500 (Conference Room 2)

Miami, FL 33126

EXECUTIVE COMMITTEE MEMBERS IN ATTENDANCE	EXECUTIVE COMMITTEE MEMBERS NOT IN ATTENDANCE	AUDIENCE:
<ol style="list-style-type: none"> 1. Andy Perez, <i>Chairman</i> 2. Gibson, Charles, Vice - Chairman 3. Ferradaz, Gilda 4. Del Valle, Juan Carlos 5. Garza, Maria 	<p>*****</p> <p>SFWIB STAFF</p> <p>Beasley, Rick Almonte, Ivan Gilbert, David Graham- Mays, Tomara Jean-Baptiste, Antoinette Kavehersi, Cheri Perrin, Yian Smith, Marian</p>	<p>Gonzalez, Monica – <i>Florida Vocational Institute</i></p>

Agenda items are displayed in the order they were discussed.

1. Call to Order and Introductions

SFWIB Chairman Andy Perez called the meeting to order at 8:17am and asked all those present introduce themselves. He noted that a quorum of members present had not been achieved.

2. A. Approval of Executive Committee Meeting Minutes of March 14, 2019

Deferred due to lack of quorum

3. Information – 2019 National Flight Academy Summer Deployment Update

Chairman Perez introduced the item and Executive Director Rick Beasley further presented.

Ms. Ferradaz asked whether if CSSF sponsored 100 students. Mr. Beasley further explained.

Mr. Gibson inquired about the CRA locations (Community Redevelopment Agency)

Youth Programs Manager Tomara Graham provided details on prior year challenges. She noted the final turnout of participants was less than anticipated. Nonetheless the outcome had been an overall success.

There was continued discussion.

[Mr. Juan Carlos del Valle arrived; **Quorum Achieved**]

2A. Approval of Executive Committee Meeting Minutes of March 14, 2019

Ms. Ferradaz noted into record a scrivener's error. She noted both Homestead and Hialeah Housing Authorities "applied and received the grant".

Staff assured this would be corrected accordingly.

Vice Chairman Gibson moved the approval of Executive Committee Meeting Minutes as amended. Motion seconded by Ms. Gilda Ferradaz; **Motion Passed Unanimously as Amended**

4. Recommendation as to approval to launch a Career Development Center at St. Thomas University

Chairman Perez introduced the item and Mr. Beasley further presented and read the item into record.

Mr. Juan Carlos del Valle moved the approval to launch a Career Development Center at St. Thomas University. Motion seconded by Ms. Gilda Ferradaz; **Further Discussion(s)**:

Mr. Gibson inquired about projections and Mr. Beasley provided details.

Chairman Perez requested additional details on staffing and operations and Mr. Beasley provide details.

Ms. Ferradaz inquired about rental/lease payment and Mr. Beasley responded that CSSF would only fund the staffing and miscellaneous office related supplies.

Motion Passed by Unanimous Consent

5. Recommendation as to Approval of the Virtual Career College Portal

Chairman Perez introduced the item and Mr. Beasley further presented.

Chairman Perez inquired about the One Community One Goal's involvement. Mr. Beasley provided further details.

Ms. Ferradaz inquired about staff's request to waive the procurement processes. Mr. Beasley provided details.

Ms. Gilda Ferradaz moved the approval of allocated funds for the MARS Community Development Corporation Apprenticeship Program for Mem and Women. Motion seconded by Ms Gilda Ferradaz: **Further Discussion(s):**

Mr. del Valle inquired about Emerge involvement. Mr. Beasley provided details.

The Committee further discussed the upcoming Emerge event.

[Ms. Maria Garza arrived]

There was continued discussion related to additional partnerships.

Motion Passed by Unanimous Consent

6. Recommendation as to Approval of Allocated Funds for the MARS Community Development Corporation Apprenticeship Program for Men and Women, GNJ

Chairman Perez introduced the item and Mr. Beasley further presented.

Chairman Perez inquired about additional funding options for this initiative and Mr. Beasley provided details on Florida State set aside funds.

Ms. Gilda Ferradaz moved the approval of allocated funds for the MARS Community Development Corporation Apprenticeship Program for Men and Women, GNJ; Motion seconded by Mr. Juan Carlos del Valle; **Motion Passed Unanimously**

New Business(es):

Mr. Beasley briefed the Committee on the following:

- Opportunity Zone Summit

Chairman Perez briefed the Committee on the following:

- 2017 Tax Bill

There being no further concerns to come before the Committee, the meeting adjourned at 9:02am.

DRAFT



SFWIB EXECUTIVE COMMITTEE

DATE: 5/9/2019

AGENDA ITEM NUMBER: 3

AGENDA ITEM SUBJECT: SFWIB 2019-20 BUDGET WORKSHOP

AGENDA ITEM TYPE: **INFORMATIONAL**

RECOMMENDATION: N/A

STRATEGIC GOAL: **STRONG WORKFORCE SYSTEM LEADERSHIP**

STRATEGIC PROJECT: **Strengthen workforce system accountability**

BACKGROUND:

On March 11, 2019, the Florida Department of Economic Opportunity released the draft PY2019-20 draft in-state allocations to the regional workforce boards for the Workforce Innovation & Opportunity Act (WIOA) Adult, Dislocated Worker, and Youth Programs, Wagner-Peyser Act Employment Service Program (WP) and Temporary Assistance for Needy Families (TANF).

Utilizing the draft released allocations, PY19-20 draft in-state allocations were calculated to allocate funding for all 24 workforce regions. Based on the projected allocations, SFW is projected to receive \$32.6 million dollars in new funding. The new funding by program is listed as the following:

FUNDS BY PROGRAM	ALLOCATION		Change +/-
	PY2019-20	PY2018-19	
WIOA Adult	\$8,474,099	\$7,827,326	8.26%
WIOA Youth	\$7,704,219	\$7,015,458	9.82%
WIOA Dislocated Workers	\$4,287,060	\$5,044,814	-15.02%
Wagner-Peyser	\$3,828,623	\$4,014,066	-4.62%
TANF	\$8,365,521	\$8,723,383	-4.10%
TOTAL	\$32,659,522	\$32,625,047	0.11%

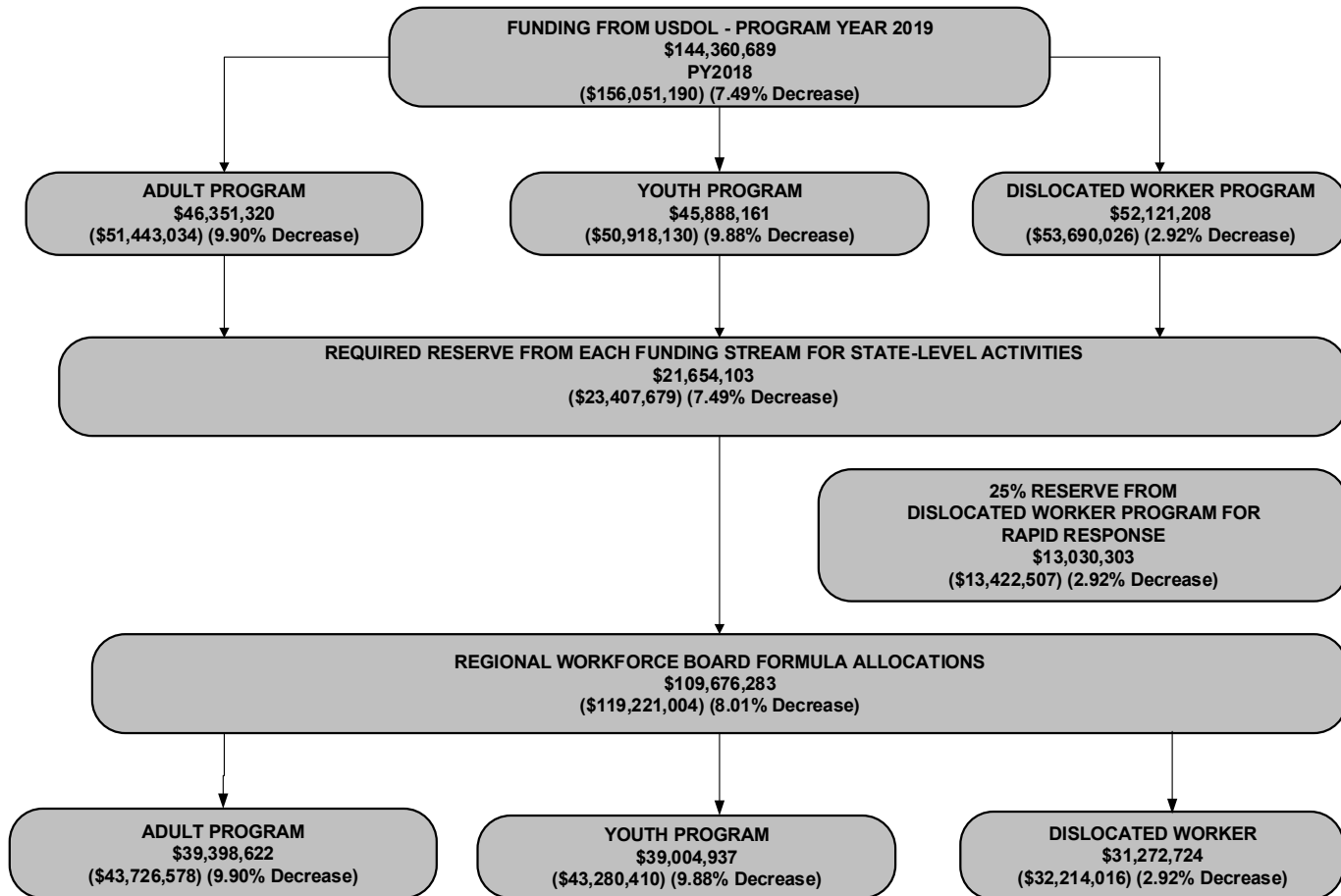
SFWIB staff is requesting to schedule a SFWIB Budget workshop to prepare the 2019-20 budget.

FUNDING: N/A

PERFORMANCE: N/A

ATTACHMENT

FLORIDA FUNDING FOR WORKFORCE INNOVATION & OPPORTUNITY ACT



**Program Year 2019 Workforce Innovation and Opportunity Act
Local Workforce Development Board Formula Allocations**

LOCAL WORKFORCE DEVELOPMENT BOARDS		WIOA ADULT	WIOA YOUTH	WIOA DISLOCATED WORKER	PY 2019 FINAL ALLOCATION	PY 2018 FINAL ALLOCATION	DIFFERENCE	%
1	CareerSource Escarosa	\$846,160	\$1,030,729	\$633,695	\$2,510,584	\$2,743,192	(\$232,608)	-8.48%
2	CareerSource Okaloosa Walton	\$314,861	\$268,126	\$261,801	\$844,788	\$964,379	(\$119,591)	-12.40%
3	CareerSource Chipola	\$363,430	\$320,527	\$169,401	\$853,358	\$928,537	(\$75,179)	-8.10%
4	CareerSource Gulf Coast	\$377,185	\$352,012	\$641,738	\$1,370,935	\$1,211,188	\$159,747	13.19%
5	CareerSource Capital Region	\$902,163	\$1,721,650	\$503,812	\$3,127,625	\$3,269,362	(\$141,737)	-4.34%
6	CareerSource North Florida	\$321,656	\$341,885	\$144,377	\$807,918	\$977,723	(\$169,805)	-17.37%
7	CareerSource Florida Crown	\$274,755	\$325,667	\$139,392	\$739,814	\$793,012	(\$53,198)	-6.71%
8	CareerSource Northeast Florida	\$2,552,829	\$2,611,709	\$2,555,065	\$7,719,603	\$8,751,610	(\$1,032,007)	-11.79%
9	CareerSource North Central Florida	\$600,875	\$1,217,361	\$319,034	\$2,137,270	\$2,240,150	(\$102,880)	-4.59%
10	CareerSource Citrus Levy Marion	\$1,379,079	\$1,346,572	\$720,048	\$3,445,699	\$3,484,297	(\$38,598)	-1.11%
11	CareerSource Flagler Volusia	\$1,085,558	\$1,071,729	\$960,408	\$3,117,695	\$3,676,499	(\$558,804)	-15.20%
12	CareerSource Central Florida	\$3,568,177	\$3,744,098	\$4,012,107	\$11,324,382	\$13,077,949	(\$1,753,567)	-13.41%
13	CareerSource Brevard	\$875,014	\$786,225	\$775,694	\$2,436,933	\$2,823,614	(\$386,681)	-13.69%
14	CareerSource Pinellas	\$1,350,737	\$1,033,026	\$1,391,813	\$3,775,576	\$4,308,689	(\$533,113)	-12.37%
15	CareerSource Tampa Bay	\$2,615,433	\$2,829,176	\$2,279,225	\$7,723,834	\$8,016,849	(\$293,015)	-3.65%
16	CareerSource Pasco Hernando	\$1,284,150	\$1,168,846	\$1,008,945	\$3,461,941	\$3,855,544	(\$393,603)	-10.21%
17	CareerSource Polk	\$1,696,330	\$1,687,332	\$1,062,553	\$4,446,215	\$4,450,266	(\$4,051)	-0.09%
18	CareerSource Suncoast	\$971,242	\$771,008	\$879,539	\$2,621,789	\$2,956,532	(\$334,743)	-11.32%
19	CareerSource Heartland	\$594,221	\$634,815	\$279,032	\$1,508,068	\$1,699,034	(\$190,966)	-11.24%
20	CareerSource Research Coast	\$1,313,423	\$1,180,934	\$1,036,962	\$3,531,319	\$3,632,811	(\$101,492)	-2.79%
21	CareerSource Palm Beach County	\$2,576,812	\$2,416,660	\$2,332,050	\$7,325,522	\$8,289,857	(\$964,335)	-11.63%
22	CareerSource Broward	\$2,957,419	\$2,531,287	\$3,245,789	\$8,734,495	\$10,244,665	(\$1,510,170)	-14.74%
23	CareerSource South Florida	\$8,474,099	\$7,704,219	\$4,287,060	\$20,465,378	\$19,888,198	\$577,180	2.90%
24	CareerSource Southwest Florida	\$2,103,014	\$1,909,344	\$1,633,184	\$5,645,542	\$6,937,047	(\$1,291,505)	-18.62%
STATEWIDE TOTALS		\$39,398,622	\$39,004,937	\$31,272,724	\$109,676,283	\$119,221,004	(\$9,544,721)	-8.01%

**Program Year 2019 Workforce Innovation and Opportunity Act
Adult Program Local Workforce Development Board Formula Allocations**

LOCAL WORKFORCE DEVELOPMENT BOARDS	AREA OF SUBSTANTIAL UNEMPLOYMENT				ECONOMICALLY DISADVANTAGED		LWDB SHARE	HH *	PY 2019 FINAL ALLOCATION	PY 2018 FINAL ALLOCATION	DIFFERENCE	%
	LABOR FORCE	UNEMPLOYED			Total	Excess						
		Total	Rate	Excess								
1 CareerSource Escarosa	56,845	3,670	6.5%	1,112	41,790	38,983	0.021476895		\$846,160	\$949,673	(\$103,513)	-10.90%
2 CareerSource Okaloosa Walton	6,445	428	6.6%	138	21,615	20,011	0.007991669	*	\$314,861	\$379,867	(\$65,006)	-17.11%
3 CareerSource Chipola	2,224	157	7.1%	57	25,000	24,480	0.009224439	*	\$363,430	\$425,762	(\$62,332)	-14.64%
4 CareerSource Gulf Coast	19,705	1,283	6.5%	396	21,215	19,955	0.009573548	*	\$377,185	\$464,662	(\$87,477)	-18.83%
5 CareerSource Capital Region	66,853	4,325	6.5%	1,317	40,125	37,786	0.022898341		\$902,163	\$923,558	(\$21,395)	-2.32%
6 CareerSource North Florida	5,077	330	6.5%	102	25,780	25,196	0.008164152		\$321,656	\$425,038	(\$103,382)	-24.32%
7 CareerSource Florida Crown	5,688	385	6.8%	129	20,915	20,330	0.006973730		\$274,755	\$299,809	(\$25,054)	-8.36%
8 CareerSource Northeast Florida	168,279	10,864	6.5%	3,291	128,970	118,976	0.064794880		\$2,552,829	\$3,062,948	(\$510,119)	-16.65%
9 CareerSource North Central Florida	38,674	2,526	6.5%	786	30,035	28,185	0.015251175		\$600,875	\$603,725	(\$2,850)	-0.47%
10 CareerSource Citrus Levy Marion	106,068	6,860	6.5%	2,087	58,350	55,859	0.035003224		\$1,379,079	\$1,401,931	(\$22,852)	-1.63%
11 CareerSource Flagler Volusia	50,585	3,264	6.5%	988	58,470	54,716	0.027553208	*	\$1,085,558	\$1,369,736	(\$284,178)	-20.75%
12 CareerSource Central Florida	128,588	8,327	6.5%	2,541	217,270	200,341	0.090566042	*	\$3,568,177	\$4,438,390	(\$870,213)	-19.61%
13 CareerSource Brevard	20,141	1,325	6.6%	419	44,825	41,459	0.022209254	*	\$875,014	\$1,041,446	(\$166,432)	-15.98%
14 CareerSource Pinellas	68,454	4,419	6.5%	1,339	79,745	73,552	0.034283852	*	\$1,350,737	\$1,624,709	(\$273,972)	-16.86%
15 CareerSource Tampa Bay	191,666	12,375	6.5%	3,750	119,555	110,409	0.066383874		\$2,615,433	\$2,745,712	(\$130,279)	-4.74%
16 CareerSource Pasco Hernando	94,501	6,102	6.5%	1,849	58,025	54,272	0.032593774		\$1,284,150	\$1,504,499	(\$220,349)	-14.65%
17 CareerSource Polk	139,400	9,029	6.5%	2,756	66,330	62,620	0.043055572		\$1,696,330	\$1,688,917	\$7,413	0.44%
18 CareerSource Suncoast	39,015	2,523	6.5%	767	54,215	49,662	0.024651664	*	\$971,242	\$1,154,808	(\$183,566)	-15.90%
19 CareerSource Heartland	35,542	2,300	6.5%	701	31,355	30,392	0.015082272		\$594,221	\$657,618	(\$63,397)	-9.64%
20 CareerSource Research Coast	105,494	6,808	6.5%	2,061	53,715	50,275	0.033336768		\$1,313,423	\$1,394,463	(\$81,040)	-5.81%
21 CareerSource Palm Beach County	194,880	12,570	6.5%	3,800	114,350	105,276	0.065403604		\$2,576,812	\$3,039,117	(\$462,305)	-15.21%
22 CareerSource Broward	176,565	11,401	6.5%	3,456	152,310	139,387	0.075064010	*	\$2,957,419	\$3,656,990	(\$699,571)	-19.13%
23 CareerSource South Florida	721,712	46,601	6.5%	14,124	318,205	300,269	0.215086200		\$8,474,099	\$7,827,926	\$646,173	8.25%
24 CareerSource Southwest Florida	127,563	8,228	6.5%	2,488	112,795	105,314	0.053377853		\$2,103,014	\$2,645,274	(\$542,260)	-20.50%
STATEWIDE TOTALS	2,569,964	166,100	6.5%	50,454	1,894,960	1,767,705	1.000000000		\$39,398,622	\$43,726,578	(\$4,327,956)	-9.90%

**Program Year 2019 Workforce Innovation and Opportunity Act
Youth Program Local Workforce Development Board Formula Allocations**

LOCAL WORKFORCE DEVELOPMENT BOARDS	AREA OF SUBSTANTIAL UNEMPLOYMENT				ECONOMICALLY DISADVANTAGED		LWDB SHARE	HH *	PY 2019 FINAL ALLOCATION	PY 2018 FINAL ALLOCATION	DIFFERENCE	%
	FORCE	UNEMPLOYED			Total	Excess						
		Total	Rate	Excess								
1 CareerSource Escarosa	56,845	3,670	6.5%	1,112	9,625	6,818	0.026425601		\$1,030,729	\$1,163,505	(\$132,776)	-11.41%
2 CareerSource Okaloosa Walton	6,445	428	6.6%	138	3,155	1,551	0.006874149	*	\$268,126	\$325,000	(\$56,874)	-17.50%
3 CareerSource Chipola	2,224	157	7.1%	57	2,530	2,010	0.008217589	*	\$320,527	\$375,163	(\$54,636)	-14.56%
4 CareerSource Gulf Coast	19,705	1,283	6.5%	396	2,665	1,405	0.009024805	*	\$352,012	\$419,028	(\$67,016)	-15.99%
5 CareerSource Capital Region	66,853	4,325	6.5%	1,317	16,765	14,426	0.044139278		\$1,721,650	\$1,855,493	(\$133,843)	-7.21%
6 CareerSource North Florida	5,077	330	6.5%	102	3,205	2,621	0.008765183	*	\$341,885	\$403,388	(\$61,503)	-15.25%
7 CareerSource Florida Crown	5,688	385	6.8%	129	3,795	3,210	0.008349382		\$325,667	\$356,854	(\$31,187)	-8.74%
8 CareerSource Northeast Florida	168,279	10,864	6.5%	3,291	23,895	13,901	0.066958418	*	\$2,611,709	\$3,104,646	(\$492,937)	-15.88%
9 CareerSource North Central Florida	38,674	2,526	6.5%	786	12,630	10,780	0.031210432		\$1,217,361	\$1,305,249	(\$87,888)	-6.73%
10 CareerSource Citrus Levy Marion	106,068	6,860	6.5%	2,087	9,135	6,644	0.034523129		\$1,346,572	\$1,369,156	(\$22,584)	-1.65%
11 CareerSource Flagler Volusia	50,585	3,264	6.5%	988	9,540	5,786	0.027476752	*	\$1,071,729	\$1,306,953	(\$235,224)	-18.00%
12 CareerSource Central Florida	128,588	8,327	6.5%	2,541	41,870	24,941	0.095990363	*	\$3,744,098	\$4,667,941	(\$923,843)	-19.79%
13 CareerSource Brevard	20,141	1,325	6.6%	419	6,955	3,589	0.020157060	*	\$786,225	\$930,729	(\$144,504)	-15.53%
14 CareerSource Pinellas	68,454	4,419	6.5%	1,339	10,995	4,802	0.026484501		\$1,033,026	\$1,290,270	(\$257,244)	-19.94%
15 CareerSource Tampa Bay	191,666	12,375	6.5%	3,750	24,470	15,324	0.072533790		\$2,829,176	\$3,004,861	(\$175,685)	-5.85%
16 CareerSource Pasco Hernando	94,501	6,102	6.5%	1,849	8,835	5,082	0.029966612		\$1,168,846	\$1,380,517	(\$211,671)	-15.33%
17 CareerSource Polk	139,400	9,029	6.5%	2,756	11,275	7,565	0.043259455		\$1,687,332	\$1,689,773	(\$2,441)	-0.14%
18 CareerSource Suncoast	39,015	2,523	6.5%	767	7,835	3,282	0.019766921	*	\$771,008	\$923,631	(\$152,623)	-16.52%
19 CareerSource Heartland	35,542	2,300	6.5%	701	5,350	4,387	0.016275253		\$634,815	\$703,935	(\$69,120)	-9.82%
20 CareerSource Research Coast	105,494	6,808	6.5%	2,061	7,875	4,435	0.030276514		\$1,180,934	\$1,250,430	(\$69,496)	-5.56%
21 CareerSource Palm Beach County	194,880	12,570	6.5%	3,800	19,235	10,161	0.061957805		\$2,416,660	\$2,864,176	(\$447,516)	-15.62%
22 CareerSource Broward	176,565	11,401	6.5%	3,456	23,310	10,387	0.064896582	*	\$2,531,287	\$3,168,401	(\$637,114)	-20.11%
23 CareerSource South Florida	721,712	46,601	6.5%	14,124	45,510	27,574	0.197519093		\$7,704,219	\$7,015,458	\$688,761	9.82%
24 CareerSource Southwest Florida	127,563	8,228	6.5%	2,488	17,310	9,829	0.048951333	*	\$1,909,344	\$2,405,853	(\$496,509)	-20.64%
STATEWIDE TOTALS	2,569,964	166,100	6.5%	50,454	327,765	200,510	1.000000000		\$39,004,937	\$43,280,410	(\$4,275,473)	-9.88%

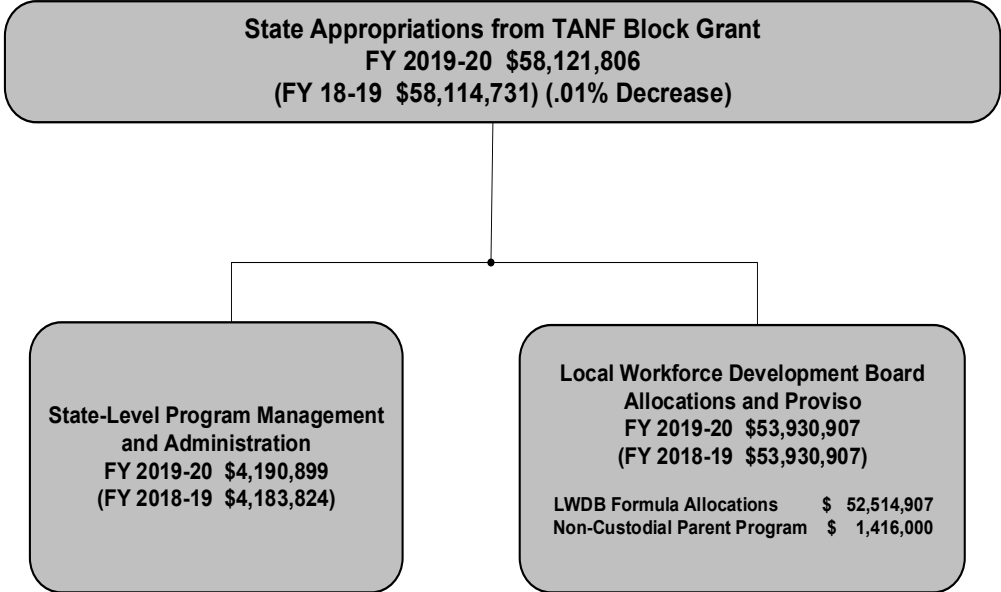
**Program Year 2019 Workforce Innovation and Opportunity Act
Dislocated Worker Program Local Workforce Development Board Formula Allocations**

LOCAL WORKFORCE DEVELOPMENT BOARDS	20% UC CLAIMANTS	25% UC CONCENTRATION	25% MASS LAYOFF	30% LONG-TERM UNEMPLOYED	LWDB SHARE	HH *	PY 2019 FINAL ALLOCATION	PY 2018 FINAL ALLOCATION	DIFFERENCE	%
1 CareerSource Escarosa	714	7,825	6,731	109	0.020263516		\$633,695	\$630,014	\$3,681	0.58%
2 CareerSource Okaloosa Walton	284	3,780	2,825	38	0.008371555		\$261,801	\$259,512	\$2,289	0.88%
3 CareerSource Chipola	169	1,661	2,857	21	0.005416908		\$169,401	\$127,612	\$41,789	32.75%
4 CareerSource Gulf Coast	717	3,985	13,654	57	0.020520697		\$641,738	\$327,498	\$314,240	95.95%
5 CareerSource Capital Region	474	6,483	5,336	95	0.016110261		\$503,812	\$490,311	\$13,501	2.75%
6 CareerSource North Florida	149	1,782	1,444	28	0.004616693		\$144,377	\$149,297	(\$4,920)	-3.30%
7 CareerSource Florida Crown	145	1,767	1,284	28	0.004457304		\$139,392	\$136,349	\$3,043	2.23%
8 CareerSource Northeast Florida	2,778	27,573	28,273	490	0.081702663		\$2,555,065	\$2,584,016	(\$28,951)	-1.12%
9 CareerSource North Central Florida	288	4,864	3,005	57	0.010201660		\$319,034	\$331,176	(\$12,142)	-3.67%
10 CareerSource Citrus Levy Marion	783	8,958	6,742	141	0.023024800		\$720,048	\$713,210	\$6,838	0.96%
11 CareerSource Flagler Volusia	1,030	11,376	9,425	191	0.030710729		\$960,408	\$999,810	(\$39,402)	-3.94%
12 CareerSource Central Florida	4,174	45,435	42,898	787	0.128294120		\$4,012,107	\$3,971,618	\$40,489	1.02%
13 CareerSource Brevard	813	9,746	7,911	144	0.024804185		\$775,694	\$851,439	(\$75,745)	-8.90%
14 CareerSource Pinellas	1,477	16,163	13,990	278	0.044505642		\$1,391,813	\$1,393,710	(\$1,897)	-0.14%
15 CareerSource Tampa Bay	2,427	24,886	24,001	459	0.072882218		\$2,279,225	\$2,266,276	\$12,949	0.57%
16 CareerSource Pasco Hernando	1,092	12,090	9,929	197	0.032262786		\$1,008,945	\$970,528	\$38,417	3.96%
17 CareerSource Polk	1,114	12,156	11,025	211	0.033976985		\$1,062,553	\$1,071,576	(\$9,023)	-0.84%
18 CareerSource Suncoast	903	12,358	8,299	158	0.028124794		\$879,539	\$878,093	\$1,446	0.16%
19 CareerSource Heartland	298	3,419	2,694	53	0.008922524	*	\$279,032	\$337,481	(\$58,449)	-17.32%
20 CareerSource Research Coast	1,148	11,627	9,424	223	0.033158665		\$1,036,962	\$987,918	\$49,044	4.96%
21 CareerSource Palm Beach County	2,502	26,049	23,436	477	0.074571373		\$2,332,050	\$2,386,564	(\$54,514)	-2.28%
22 CareerSource Broward	3,431	34,919	32,442	692	0.103789768		\$3,245,789	\$3,419,274	(\$173,485)	-5.07%
23 CareerSource South Florida	4,097	54,466	37,774	922	0.137086251	*	\$4,287,060	\$5,044,814	(\$757,754)	-15.02%
24 CareerSource Southwest Florida	1,685	21,730	15,253	312	0.052223903		\$1,633,184	\$1,885,920	(\$252,736)	-13.40%
STATEWIDE TOTALS	32,692	365,098	320,652	6,168	1.000000000		\$31,272,724	\$32,214,016	(\$941,292)	-2.92%

**Program Year 2019 Workforce Innovation and Opportunity Act
Supplemental Dislocated Worker Program Local Workforce Development Board
Formula Allocations**

LOCAL WORKFORCE DEVELOPMENT BOARDS	20% UC CLAIMANTS	25% UC CONCENTRATION	25% MASS LAYOFF	30% LONG-TERM UNEMPLOYED	LWDB SHARE	PY 2019 FINAL ALLOCATION	PY2019 SUPPLEMENTAL	TOTAL
1 CareerSource Escarosa	714	7,825	6,731	109	0.020263516	\$633,695	\$193,116	\$826,811
2 CareerSource Okaloosa Walton	284	3,780	2,825	38	0.008371555	\$261,801	\$79,783	\$341,584
3 CareerSource Chipola	169	1,661	2,857	21	0.005416908	\$169,401	\$51,624	\$221,025
4 CareerSource Gulf Coast	717	3,985	13,654	57	0.020520697	\$641,738	\$195,567	\$837,305
5 CareerSource Capital Region	474	6,483	5,336	95	0.016110261	\$503,812	\$153,535	\$657,347
6 CareerSource North Florida	149	1,782	1,444	28	0.004616693	\$144,377	\$43,998	\$188,375
7 CareerSource Florida Crown	145	1,767	1,284	28	0.004457304	\$139,392	\$42,479	\$181,871
8 CareerSource Northeast Florida	2,778	27,573	28,273	490	0.081702663	\$2,555,065	\$778,645	\$3,333,710
9 CareerSource North Central Florida	288	4,864	3,005	57	0.010201660	\$319,034	\$97,224	\$416,258
10 CareerSource Citrus Levy Marion	783	8,958	6,742	141	0.023024800	\$720,048	\$219,432	\$939,480
11 CareerSource Flagler Volusia	1,030	11,376	9,425	191	0.030710729	\$960,408	\$292,680	\$1,253,088
12 CareerSource Central Florida	4,174	45,435	42,898	787	0.128294120	\$4,012,107	\$1,222,673	\$5,234,780
13 CareerSource Brevard	813	9,746	7,911	144	0.024804185	\$775,694	\$236,390	\$1,012,084
14 CareerSource Pinellas	1,477	16,163	13,990	278	0.044505642	\$1,391,813	\$424,149	\$1,815,962
15 CareerSource Tampa Bay	2,427	24,886	24,001	459	0.072882218	\$2,279,225	\$694,585	\$2,973,810
16 CareerSource Pasco Hernando	1,092	12,090	9,929	197	0.032262786	\$1,008,945	\$307,472	\$1,316,417
17 CareerSource Polk	1,114	12,156	11,025	211	0.033976985	\$1,062,553	\$323,809	\$1,386,362
18 CareerSource Suncoast	903	12,358	8,299	158	0.028124794	\$879,539	\$268,036	\$1,147,575
19 CareerSource Heartland	298	3,419	2,694	53	0.008922524	\$279,032	\$85,034	\$364,066
20 CareerSource Research Coast	1,148	11,627	9,424	223	0.033158665	\$1,036,962	\$316,010	\$1,352,972
21 CareerSource Palm Beach County	2,502	26,049	23,436	477	0.074571373	\$2,332,050	\$710,683	\$3,042,733
22 CareerSource Broward	3,431	34,919	32,442	692	0.103789768	\$3,245,789	\$989,141	\$4,234,930
23 CareerSource South Florida	4,097	54,466	37,774	922	0.137086251	\$4,287,060	\$1,306,463	\$5,593,523
24 CareerSource Southwest Florida	1,685	21,730	15,253	312	0.052223903	\$1,633,184	\$497,706	\$2,130,890
STATEWIDE TOTALS	32,692	365,098	320,652	6,168	1.000000000	\$31,272,724	\$9,530,234	\$40,802,958

**FLORIDA FUNDING FOR
Temporary Assistance for Needy Families (TANF)**

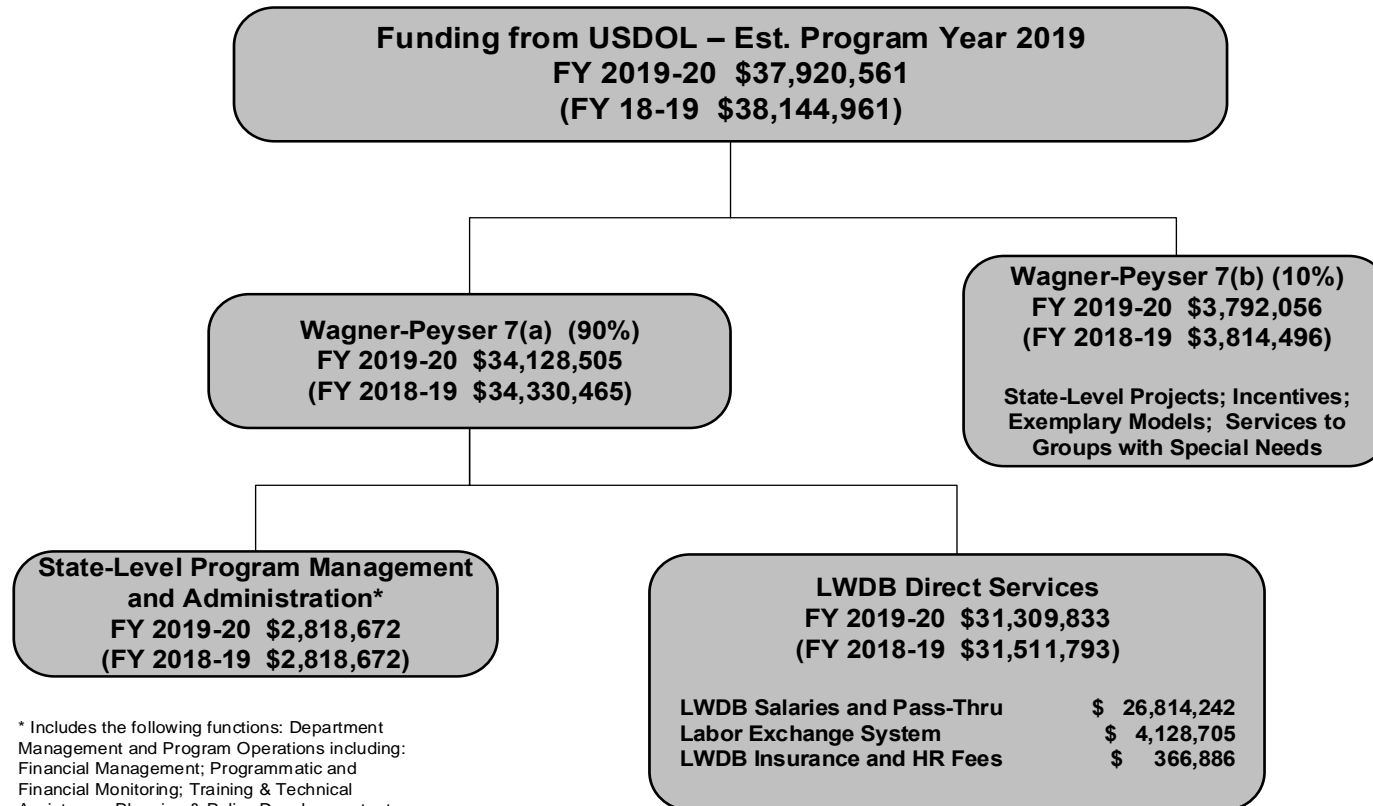


**Program Year 2019 Temporary Assistance for Needy Families
Local Workforce Development Board Formula Allocations**

LOCAL WORKFORCE DEVELOPMENT BOARDS		50% SNAP	50% WELFARE CASELOAD	RWB SHARE	HH * FY 2019/20 FINAL ALLOCATION	FY 2018/19 FINAL ALLOCATION	DIFFERENCE	%
1	CareerSource Escarosa	169,740	2,853	0.023557912	\$1,237,142	\$1,240,048	(\$2,906)	-0.23%
2	CareerSource Okaloosa Walton	70,721	1,224	0.009968537	\$523,497	\$490,772	\$32,725	6.67%
3	CareerSource Chipola	47,880	706	0.006216466	\$326,457	\$317,494	\$8,963	2.82%
4	CareerSource Gulf Coast	78,748	1,105	0.009980450	\$524,122	\$500,777	\$23,345	4.66%
5	CareerSource Capital Region	122,548	2,598	0.020830083	\$1,093,890	\$1,195,977	(\$102,087)	-8.54%
6	CareerSource North Florida	53,100	464	0.006358108	\$333,895	\$370,995	(\$37,100)	-10.00%
7	CareerSource Florida Crown	55,322	939	0.007717734	\$405,296	\$385,832	\$19,464	5.04%
8	CareerSource Northeast Florida	576,344	9,055	0.079699174	\$4,185,395	\$4,646,890	(\$461,495)	-9.93%
9	CareerSource North Central Florida	93,332	1,748	0.013735998	\$721,345	\$801,494	(\$80,149)	-10.00%
10	CareerSource Citrus Levy Marion	205,092	4,294	0.032139920	\$1,687,825	\$1,611,592	\$76,233	4.73%
11	CareerSource Flagler Volusia	215,150	5,381	0.037520217	\$1,970,371	\$1,931,799	\$38,572	2.00%
12	CareerSource Central Florida	1,001,532	17,569	0.142191955	\$7,467,197	\$6,974,230	\$492,967	7.07%
13	CareerSource Brevard	165,970	3,219	0.024898357	\$1,307,535	\$1,142,619	\$164,916	14.43%
14	CareerSource Pinellas	257,051	6,100	0.043399499	\$2,279,121	\$2,248,158	\$30,963	1.38%
15	CareerSource Tampa Bay	587,639	9,665	0.080636866	\$4,234,638	\$4,344,963	(\$110,325)	-2.54%
16	CareerSource Pasco Hernando	237,902	5,247	0.038436403	\$2,018,484	\$1,813,119	\$205,365	11.33%
17	CareerSource Polk	335,417	6,178	0.048897077	\$2,567,825	\$2,364,728	\$203,097	8.59%
18	CareerSource Suncoast	174,622	3,050	0.025690471	\$1,349,133	\$1,479,908	(\$130,775)	-8.84%
19	CareerSource Heartland	95,832	1,984	0.014920455	\$783,546	\$587,535	\$196,011	33.36%
20	CareerSource Research Coast	184,899	1,140	0.018007207	\$945,647	\$1,050,719	(\$105,072)	-10.00%
21	CareerSource Palm Beach County	428,607	3,261	0.042370666	\$2,225,092	\$2,198,888	\$26,204	1.19%
22	CareerSource Broward	640,193	6,993	0.072498723	\$3,807,264	\$3,988,329	(\$181,065)	-4.54%
23	CareerSource South Florida	1,384,011	15,709	0.159298054	\$8,365,521	\$8,723,383	(\$357,862)	-4.10%
24	CareerSource Southwest Florida	363,007	3,947	0.041029668	\$2,154,669	\$2,104,658	\$50,011	2.38%
STATEWIDE TOTALS		7,544,659	114,429	1.000000000	\$52,514,907	\$52,514,907	\$0	0.00%

*Indicates 90% Hold Harmless in Effect

ESTIMATED FLORIDA FUNDING FOR WAGNER-PEYSER



* Includes the following functions: Department Management and Program Operations including: Financial Management; Programmatic and Financial Monitoring; Training & Technical Assistance, Planning & Policy Development, etc. for a total of \$2,628,011. An additional \$190,661 is reserved for CareerSource Florida costs associated with this program.

**Program Year 2019 Wagner-Peyser Act
Estimated Local Workforce Development Board Formula Allocations**

LOCAL WORKFORCE DEVELOPMENT BOARDS		2/3 CIVILIAN LABOR FORCE	1/3 UNEMPLOYED INDIVIDUALS	LWDB SHARE	PY 2019 FINAL ALLOCATION	PY 2018 FINAL ALLOCATION	DIFFERENCE	%
1	CareerSource Escarosa	225,952	7,825	0.021862133	\$586,217	\$590,849	(\$4,632)	-0.78%
2	CareerSource Okaloosa Walton	126,913	3,780	0.011717915	\$314,207	\$316,516	(\$2,309)	-0.73%
3	CareerSource Chipola	42,170	1,661	0.004263333	\$114,318	\$114,022	\$296	0.26%
4	CareerSource Gulf Coast	100,213	3,985	0.010165910	\$272,591	\$264,584	\$8,007	3.03%
5	CareerSource Capital Region	187,922	6,483	0.018159715	\$486,939	\$490,035	(\$3,096)	-0.63%
6	CareerSource North Florida	47,094	1,782	0.004694543	\$125,881	\$128,756	(\$2,875)	-2.23%
7	CareerSource Florida Crown	46,852	1,767	0.004665084	\$125,091	\$126,234	(\$1,143)	-0.91%
8	CareerSource Northeast Florida	800,591	27,573	0.077322502	\$2,073,344	\$2,083,360	(\$10,016)	-0.48%
9	CareerSource North Central Florida	148,643	4,864	0.014123040	\$378,699	\$379,347	(\$648)	-0.17%
10	CareerSource Citrus Levy Marion	200,470	8,958	0.021236726	\$569,447	\$572,479	(\$3,032)	-0.53%
11	CareerSource Flagler Volusia	300,516	11,376	0.029961092	\$803,384	\$810,866	(\$7,482)	-0.92%
12	CareerSource Central Florida	1,369,031	45,435	0.130657172	\$3,503,473	\$3,470,006	\$33,467	0.96%
13	CareerSource Brevard	276,558	9,746	0.026912345	\$721,634	\$724,027	(\$2,393)	-0.33%
14	CareerSource Pinellas	492,704	16,163	0.046850240	\$1,256,254	\$1,265,132	(\$8,878)	-0.70%
15	CareerSource Tampa Bay	735,690	24,886	0.070641795	\$1,894,206	\$1,885,754	\$8,452	0.45%
16	CareerSource Pasco Hernando	302,447	12,090	0.030738752	\$824,236	\$819,373	\$4,863	0.59%
17	CareerSource Polk	298,759	12,156	0.030558783	\$819,411	\$815,251	\$4,160	0.51%
18	CareerSource Suncoast	365,817	12,358	0.035111194	\$941,480	\$941,108	\$372	0.04%
19	CareerSource Heartland	76,913	3,419	0.008131451	\$218,039	\$221,884	(\$3,845)	-1.73%
20	CareerSource Research Coast	281,898	11,627	0.028977526	\$777,010	\$769,971	\$7,039	0.91%
21	CareerSource Palm Beach County	731,004	26,049	0.071398377	\$1,914,493	\$1,927,568	(\$13,075)	-0.68%
22	CareerSource Broward	1,036,212	34,919	0.099377123	\$2,664,722	\$2,684,320	(\$19,598)	-0.73%
23	CareerSource South Florida	1,428,609	54,466	0.142783204	\$3,828,623	\$4,014,066	(\$185,443)	-4.62%
24	CareerSource Southwest Florida	611,793	21,730	0.059690045	\$1,600,543	\$1,600,694	(\$151)	-0.01%
STATEWIDE TOTALS		10,234,771	365,098	1.000000000	\$26,814,242	\$27,016,202	(\$201,960)	-0.75%



SFWIB EXECUTIVE COMMITTEE

DATE: 5/9/2019

AGENDA ITEM NUMBER: 4

AGENDA ITEM SUBJECT: TECHHIRE SUMMER BOOTCAMPS

AGENDA ITEM TYPE: **APPROVAL**

RECOMMENDATION: SFWIB staff recommends to the Executive Committee to recommend to the Board the approval to allocate an amount not to exceed up to \$1,360,000 in Temporary Assistance for Needy Families funds for the TechHire Summer Boot Camps, as set forth below.

STRATEGIC GOAL: **DEDICATED COMMITMENT TO YOUTH PARTICIPATION**

STRATEGIC PROJECT: **Expand career exploration pathway programs**

BACKGROUND:

On June 15, 2017, the South Florida Workforce Investment Board (SFWIB) approved the first CareerSource South Florida TechHire Boot Camp program. The initial TechHire Summer Boot Camp started on June 19, 2017. The program was designed to train youth between the ages 15-22 with the skills to become entry-level professionals in high demand Informational Technology (IT) careers.

Since the inception of the TechHire Summer Boot Camps, a total of 718 youth have participated in the boot camps. Seventy-seven percent (554) of the youth participants completed the 6-week long program and 235 youth participants obtained an industry recognized IT credential. The following is breakout for each summer:

Program Year	Youth Enrolled	Youth Completed	Credential Earned
Summer 2017	465	306	141
Summer 2018	253	248	94
TOTAL	718	554	235

For the 2019 program year, CSSF staff is proposing to expand the TechHire Summer Boot Camps to increase the age range for the participants from 15-22 to 15-24. Additionally, CSSF proposes to include current university students at Florida International University (FIU), Florida Memorial University (FMU), Miami-Dade College (MDC) and St. Thomas University. The expansion of the TechHire Summer Boot Camps to these universities will enhance the student's skill sets and lead to better employment opportunities in the IT Industry.

TechHire Summer Boot Camps are designed to expose the local workforce development area's future workforce to the IT Industry by connecting youth participants to both traditional and nontraditional educational resources. This includes a mix of accelerated learning programs, such as Gaming, Cyber Security, Coding, Web Development, Networking, and Comp TIA A+.

In partnership with Miami-Dade County Public Schools, the boot camps will be offered in six-week sessions. The sessions are scheduled for June 10, 2019 through July 19, 2019, and will be held throughout Miami-Dade County at thirteen (13) Miami-Dade County Public Schools, as well as, CSSF TechHire Center at Big Brothers Big Sisters, FIU, FMU and MDC for a total of 34 boot camp sessions.

Participating youth completing the program will receive a \$300.00 stipend, an additional \$200.00 stipend will be provided upon passing the certification exam and obtaining a credential.

The recommended funding is proposed to be allocated in the following manner:

- An allocation of funding up to \$1,020,000 to contract with participating training vendors to provide the IT training for the boot camp sessions.
- An allocation of funding up to \$340,000 to contract with youth providers to provide program stipends to the TechHire Boot Camp participants.

FUNDING: Temporary Assistance for Needy Families (TANF)

PERFORMANCE: N/A

ATTACHMENT

2019 TechHire Boot Camps Locations

	Schools	Address	District	Miami-Dade County Commissioners	School District	School Board Member	Principals
1	Miami Norland Senior High School	3301 Miami Gardens Drive Miami Gardens, 33056	District 1	Jordan	District 1	Dr. Steve Gallon III	Reginald E. Lee
2	Miami Northwestern Senior High School	1100 NW 71st Street Miami, 33150	District 3	Edmonson	District 2	Dr. Dorothy Bendross-Mindingall	Wallace Aristide
3	North Miami Senior High School	1310 NE 8th Avenue, North Miami, 33161	District 2	Monestime	District 3	Dr. Steve Gallon III	Patrick Lacouty
4	Booker T. Washington Senior High School	1200 NW 6th Ave, Miami, FL 33136	District 3	Edmonson	District 2	Dr. Dorothy Bendross-Mindingall	Wallace Aristide
5	North Miami Beach Senior High School	1247 NE 167th Street, Miami, 33162	District 4	Heyman	District 3	Dr. Martin Karp	Randy Milliken
6	Miami Senior High School	2450 SW 1st Street Miami, 33135	District 5	Barriero	District 6	Ms. Mari Tere Rojas	Benny Valdes
7	Miami Killian Senior High School	10655 SW 97th Avenue, Miami, 33176	District 9	Moss	District 7	Ms. Lubby Navarro	Magda R. Pereira
8	Southridge Senior High School	19356 SW 114th Avenue Miami, Florida 33137	District 9	Moss	District 7	Ms. Lubby Navarro	Humberto J. Miret
9	Homestead Senior High School	2351 SE 12th Avenue, Homestead, 33035	District 8	Cava	District 9	Dr. Lawrence S. Feldman	Guillermo Munoz
10	South Miami Senior High School	6856 SW 53rd Street, Miami, 33155	District 7	Suarez	District 6	Ms. Mari Tere Rojas	Gilberto Bonce
11	South Dade Senior High School	28401 SW 167th Avenue Homestead, FL 33030	District 8	Cava	District 9	Dr. Lawrence S. Feldman	J C. DeArmas
12	Hialeah Senior High School	251 East 47th Street Hialeah, Florida 33013	District 13	Bovo	District 4	Ms. Perla Tabares Hantman	Heriberto Sanchez
13	John I. Ferguson Senior High School	15900 SW 56th Street Florida 33185	District 11	Martinez	District 8	Dr. Marta Pérez	Rafael A. Villalobos

	Schools	Address	District	Miami-Dade County Commissioners	School District	School Board Member
14	Florida International University- Modesto Campus*	11200 SW 8th Street, DM 233 Miami, FL 33199	District 11	Martinez	District 8	Dr. Marta Perez
16	Big Brothers Big Sister TechHire Center *	550 NW 42nd Avenue, Miami, 33126	District 6	Sosa	District 5	Susie B. Castillo
17	Florida Memorial University *	15800 NW 42nd Ave, Miami Gardens, FL 33054	District 1	Jordan	District 1	Dr. Steve Gallon III
18	Miami-Dade College - Homestead*	500 College Terrace Homestead, FL 33030	District 9	Moss	District 9	Dr. Lawrence S. Feldman



SFWIB EXECUTIVE COMMITTEE

DATE: 5/9/2019

AGENDA ITEM NUMBER: 5

AGENDA ITEM SUBJECT: TECHHIRE SUMMER BOOTCAMPS

AGENDA ITEM TYPE: **APPROVAL**

RECOMMENDATION: SFWIB staff recommends to the Executive Committee to recommend the Board the approval to allocate an amount not to exceed up to \$97,000 in Temporary Assistance for Needy Families funds for the TechHire Summer Boot Camps, as set forth below.

STRATEGIC GOAL: **DEDICATED COMMITMENT TO YOUTH PARTICIPATION**

STRATEGIC PROJECT: **Expand career exploration pathway programs**

BACKGROUND:

On June 15, 2017, the South Florida Workforce Investment Board (SFWIB) approved the first CareerSource South Florida TechHire Boot Camp program. The initial TechHire Summer Boot Camp started on June 19, 2017. The program was designed to train youth between the ages 15-22 with the skills to become entry-level professionals in high demand Informational Technology (IT) careers.

Since the inception of the TechHire Summer Boot Camps, a total of 718 youth have participated in the boot camps. Seventy-seven percent (554) of the youth participants completed the 6-week long program and 235 youth participants obtained an industry recognized IT credential. The following is breakout for each summer:

Program Year	Youth Enrolled	Youth Completed	Credential Earned
Summer 2017	465	306	141
Summer 2018	253	248	94
TOTAL	718	554	235

For the 2019 program year, CSSF staff is proposing to expand the TechHire Summer Boot Camps to increase the age range for the participants from 15-22 to 15-24. Additionally, CSSF proposes to include current university students at Florida International University (FIU), Florida Memorial University (FMU), Miami-Dade College (MDC) and St. Thomas University. The expansion of the TechHire Summer Boot Camps to these universities will enhance the student's skill sets and lead to better employment opportunities in the IT Industry.

TechHire Summer Boot Camps are designed to expose the local workforce development area's future workforce to the IT Industry by connecting youth participants to both traditional and nontraditional educational resources. This includes a mix of accelerated learning programs, such as Gaming, Cyber Security, Coding, Web Development, Networking and Comp TIA A+.

In partnership with Miami-Dade County Public Schools, the boot camps will be offered in six-week sessions. The sessions are scheduled for June 10, 2019 through July 19, 2019, and will be held throughout Miami-Dade County at thirteen (13) Miami-Dade County Public Schools, as well as, CSSF TechHire Center at Big Brothers Big Sisters, FIU, FMU and MDC for a total of 34 boot camp sessions.

Participating youth completing the program will receive a \$300.00 stipend, an additional \$200.00 stipend will be provided upon passing the certification exam and obtaining a credential.

CSSF staff recommend a funding allocation up to \$97,500 to contract with MDCPS to fund 13 certified teachers. In order for students to receive instructional program hours for the Career and Professional Education (CAPE), CSSF will fund the teachers' positions to supervise the academic part of the TechHire Summer Boot Camps Program. Additionally, the teachers will be responsible for program recruitment, data entry of student grades into the MDCPS grading system, and program retention. MDCPS will hire 13 certified teachers beginning May 9, 2019 through August 9, 2019, at a salary of up to \$7,500.00 per teacher.

In the following procurement process of Miami-Dade County Administrative Order No. 3-38, it is recommended that the SFWIB waive the competitive procurement as it recommended by the Executive Director that this is in the best interest of the SFWIB. A two-thirds (2/3) vote of a quorum present is required to waive the competitive procurement process and award Miami-Dade County Public Schools, an allocation not to exceed \$97,500 in Temporary Assistance for Needy Families funds for the TechHire Summer Boot Camps.

FUNDING: Temporary Assistance for Needy Families (TANF)

PERFORMANCE: N/A

NO ATTACHMENT



SFWIB EXECUTIVE COMMITTEE

DATE: 5/9/2019

AGENDA ITEM NUMBER: 6

AGENDA ITEM SUBJECT: SUMMER YOUTH EMPLOYMENT PROGRAM FOR THE CITY OF OPA LOCKA

AGENDA ITEM TYPE: **APPROVAL**

RECOMMENDATION: SFWIB staff recommends to the Executive Committee to recommend to the Board the approval to accept up to \$50,000 funds from CareerSource Florida for a Summer Youth Employment Program for the City of Opa Locka and allocate funds & contract with Adults Mankind Organization, Inc., as set forth below.

STRATEGIC GOAL: **DEDICATED COMMITMENT TO YOUTH PARTICIPATION**

STRATEGIC PROJECT: **Emphasize work-based learning and training**

BACKGROUND:

CareerSource Florida has agreed to enter into a partnership with the SFWIB to provide employment opportunities to up to 86 youth residents of the City of Opa Locka. The SFWIB will provide summer job opportunities for youth between the ages of 15 to 24. Youth enrolled in the program will also receive employability skills training.

As part of the partnership, CareerSource Florida will provide up to \$50,000 in workforce funding to the SFWIB toward the program. The SFWIB will provide \$100,000 in Temporary Assistance for Needy Families (TANF) funds. The total amount being allocated for the program is \$150,000 for the SYEP. The program will provide entry-level positions with local businesses, public sector and community-based organizations to the City of Opa Locka's future workforce.

The youth participants will earn \$9.00 per hour for a total of 140 hours, 20 of which will be work readiness training. Youth will also receive financial literacy training from Miami- Dade County Credit Union and information related to budgeting and investing.

Adults Mankind Organization, Inc. will be responsible for administering the program, which includes payroll, recruitment, job placement, and work readiness training for the youth participants.

The program is scheduled to take place beginning June 10, 2019 through August 11, 2019.

FUNDING: City of Miami Gardens and Temporary Assistance for Needy Families (TANF)

PERFORMANCE: N/A

NO ATTACHMENT